



2007 ETBF European Mens Championship - Short

Oil Per Board: 45 mL Oil Pattern Distance: 35 Feet Volume Oil Total: 22.59 mL Total Boards Crossed: 502 Boards

Forward Oil Total: 11.16 mL Reverse Oil Total: 11.43 mL
 Forward Boards Crossed: 248 Boards Reverse Boards Crossed: 254 Boards

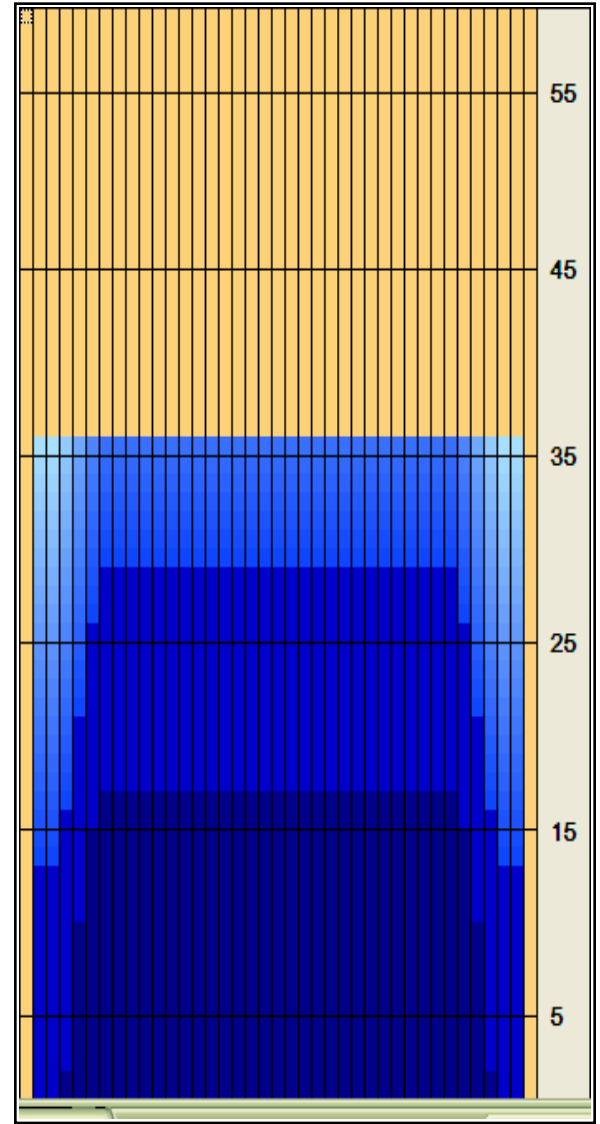
	Start	Stop	Loads	Speed	Crossed	Start	End	Feet	T.Oil
1	2L	2R	1	14	37	0.0	0.0	0.0	1,665
2	4L	4R	1	14	33	0.0	1.9	1.9	1485
3	5L	5R	3	18	93	1.9	9.5	7.6	4185
4	6L	6R	2	18	58	9.5	14.6	5.1	2610
5	7L	7R	1	18	27	14.6	17.1	2.5	1215
6	2L	2R	0	18	0	17.1	27.0	9.9	0
7	2L	2R	0	22	0	27.0	30.0	3.0	0
8	2L	2R	0	30	0	30.0	35.0	5.0	0

Navigation: Forward Reverse More Info

	Start	Stop	Loads	Speed	Crossed	Start	End	Feet	T.Oil
1	2L	2R	0	30	0	35.0	28.0	-7.0	0
2	7L	7R	1	22	27	28.0	24.9	-3.1	1215
3	6L	6R	2	18	58	24.9	19.8	-5.1	2610
4	5L	5R	2	18	62	19.8	14.7	-5.1	2790
5	4L	4R	1	18	33	14.7	12.2	-2.5	1485
6	2L	2R	2	18	74	12.2	7.1	-5.1	3330
7	2L	2R	0	10	0	7.1	0.0	-7.1	0

Navigation: Forward Reverse More Info

Forward Oil
 Reverse Oil
 Combined Oil
 Buff Area



Arrow Zone Ratios

Item	2-5L:16L-20	6-10L:16:-20	11-15L:16L-20	16L-20:20-16R	16L-20:20-16R	20-16R:15-11R	20-16R:10-6R	20-16R:5-2R
ml Arrow	236.25	702	720	720	720	720	702	236.25
Zone Ratio	3.05	1.03	1	1	1	1	1.03	3.05

Track Zone Ratios

Item	3L-7L:18L-18R	8L-12L:18L-18R	13L-17L:18L-18R	18L-18R:17R-13R	18L-18R:12R-8R	18L-18R:7R-3R
Description	Outside Track:Middle	Middle Track:Middle	Inside Track:Middle	Middle: Inside Track	Middle:Middle Track	Middle:Outside Track
Track Zone Ratio	1.67	1	1	1	1	1.67

