



2008 EBT Brunswick Aalborg International - Short

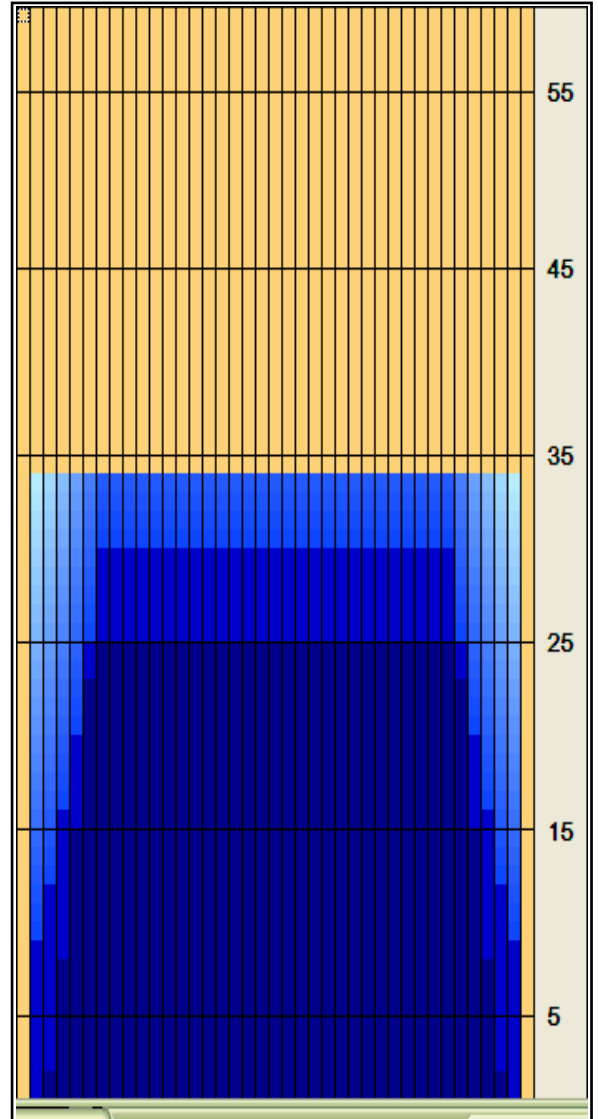
Oil Per Board: 30 uL Oil Pattern Distance: 34 Feet Volume Oil Total: 20.76 mL Total Boards Crossed: 692 Boards

Forward Oil Total: 10.35 mL Reverse Oil Total: 10.41 mL
 Forward Boards Crossed: 345 Boards Reverse Boards Crossed: 347 Boards

	Start	Stop	Loads	Speed	Crossed	Start	End	Feet	T.Oil
1	2L	2R	1	18	37	0.0	0.0	0.0	1,110
2	3L	3R	1	18	35	0.0	2.5	2.5	1050
3	4L	4R	2	18	66	2.5	7.6	5.1	1980
4	5L	5R	3	18	93	7.6	15.2	7.6	2790
5	6L	6R	3	18	87	15.2	22.8	7.6	2610
6	7L	7R	1	18	27	22.8	25.3	2.5	810
7	2L	2R	0	18	0	25.3	30.0	4.7	0
8	2L	2R	0	26	0	30.0	34.0	4.0	0

	Start	Stop	Loads	Speed	Crossed	Start	End	Feet	T.Oil
1	2L	2R	0	26	0	34.0	29.0	-5.0	0
2	7L	7R	2	18	54	29.0	23.9	-5.1	1620
3	6L	6R	2	18	58	23.9	18.8	-5.1	1740
4	5L	5R	2	14	62	18.8	14.9	-3.9	1860
5	4L	4R	2	14	66	14.9	11.0	-3.9	1980
6	3L	3R	2	10	70	11.0	8.2	-2.8	2100
7	2L	2R	1	10	37	8.2	6.8	-1.4	1110
8	2L	2R	0	10	0	6.8	0.0	-6.8	0

Forward Oil
 Reverse Oil
 Combined Oil
 Buff Area



Arrow Zone Ratios

Item	2-5L:16L-20	6-10L:16-20	11-15L:16L-20	16L-20:20-16R	16L-20:20-16R	20-16R:15-11R	20-16R:10-6R	20-16R:5-2R
ul Arrow	225	642	660	660	660	660	642	225
Zone Ratio	2.93	1.03	1	1	1	1	1.03	2.93

Track Zone Ratios

Item	3L-7L:18L-18R	8L-12L:18L-18R	13L-17L:18L-18R	18L-18R:17R-13R	18L-18R:12R-8R	18L-18R:7R-3R
Description	Outside Track:Middle	Middle Track:Middle	Inside Track:Middle	Middle: Inside Track	Middle:Middle Track	Middle:Outside Track
Track Zone Ratio	1.59	1	1	1	1	1.59

