



# 2008 ETBF European Champions Cup (3543)

Oil Per Board: 40 uL      Oil Pattern Distance: 43 Feet      Volume Oil Total: 23.72 mL      Total Boards Crossed: 593 Boards  
 Forward Oil Total: 15.4 mL      Reverse Oil Total: 8.32 mL  
 Forward Boards Crossed: 385 Boards      Reverse Boards Crossed: 208 Boards

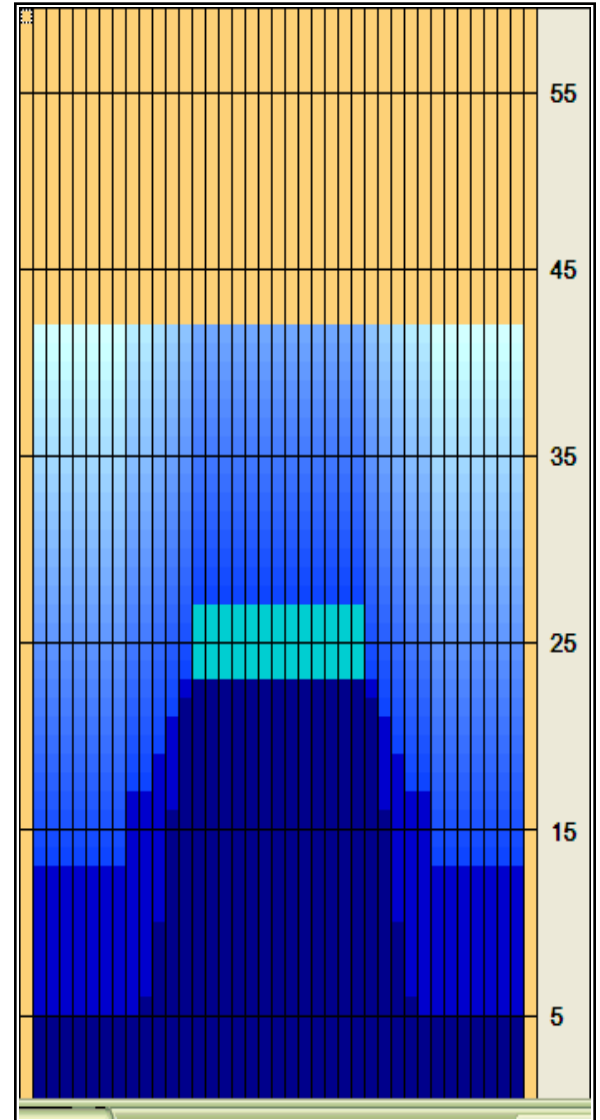
	Start	Stop	Loads	Speed	Crossed	Start	End	Feet	T.Oil
1	2L	2R	5	10	185	0.0	5.6	5.6	7,400
2	10L	10R	1	10	21	5.6	7.0	1.4	840
3	11L	11R	3	10	57	7.0	11.2	4.2	2280
4	12L	12R	3	14	51	11.2	17.1	5.9	2040
5	13L	13R	3	14	45	17.1	23.0	5.9	1800
6	14L	14R	2	18	26	23.0	28.1	5.1	1040
7	2L	2R	0	18	0	28.1	31.0	2.9	0
8	2L	2R	0	22	0	31.0	37.0	6.0	0
9	2L	2R	0	30	0	37.0	43.0	6.0	0

◀ ▶ ⏪ ⏩ Forward Reverse More Info

	Start	Stop	Loads	Speed	Crossed	Start	End	Feet	T.Oil
1	2L	2R	0	26	0	43.0	23.0	-20.0	0
2	13L	13R	1	14	15	23.0	21.1	-1.9	600
3	12L	12R	1	14	17	21.1	19.2	-1.9	680
4	11L	11R	1	14	19	19.2	17.3	-1.9	760
5	9L	9R	2	14	46	17.3	13.4	-3.9	1840
6	2L	2R	2	14	74	13.4	9.5	-3.9	2960
7	2L	2R	1	10	37	9.5	8.1	-1.4	1480
8	2L	2R	0	10	0	8.1	0.0	-8.1	0

◀ ▶ ⏪ ⏩ Forward Reverse More Info

Forward Oil  
Reverse Oil  
Combined Oil  
Buff Area



Arrow Zone Ratios

Item	2-5L:16L-20	6-10L:16:-20	11-15L:16L-20	16L-20:20-16R	16L-20:20-16R	20-16R:15-11R	20-16R:10-6R	20-16R:5-2R
ul Arrow	320	360	856	1000	1000	856	360	320
Zone Ratio	3.13	2.78	1.17	1	1	1.17	2.78	3.13

Track Zone Ratios

Item	3L-7L:18L-18R	8L-12L:18L-18R	13L-17L:18L-18R	18L-18R:17R-13R	18L-18R:12R-8R	18L-18R:7R-3R
Description	Outside Track:Middle	Middle Track:Middle	Inside Track:Middle	Middle: Inside Track	Middle:Middle Track	Middle:Outside Track
Track Zone Ratio	3.13	1.98	1.02	1.02	1.98	3.13

