

# 2008 EBT 5<sup>th</sup> Oltremare Columbia 300 Open



## TECHNICAL REPORT 15 -22 November · 2008 Bowling Oltremare · Naples · Italy

---

### **Tournament Organizer**

Stefano Coppa

### **Kegel Technician**

Sven Scheepers

### **Pattern Design**

Kegel Team

### **Lane Surface**

Qubica/AMF installed October 2008

### **Pinsetters and Pins**

Brunswick A2 | Twister

### **Lane Maintenance Machinery**

Kegel Kustodian Ion

### **Lane Conditioner**

Kegel Infinity

### **Lane Cleaner**

Kegel Defense C

### **Kegel Pattern KODE**

3342

### **Pattern Distance**

42 Feet

### **Pattern Volume**

Forward 13.08 mL

Reverse 10.52 mL

Total 23.60 mL

### **Side to Side Ratios**

22' 3.3 to 1

40' 2.6 to 1

### **Front to Back Taper Ratios**

Outside Taper 4.8 to 1

Inside Taper 4.5 to 1

# 2008 EBT 5<sup>th</sup> Oltremare Columbia 300 Open



## Side to Side Ratios

22' 3.3 to 1

42' 2.6 to 1

The 2D chart below shows select ratios at key distances throughout the pattern. Here we are using USBC Sport Bowling ratios which are calculated by dividing the average amount of oil from 18L-18R divided by the average from boards 3L-7L and 7R-3R. Side to side ratios can be an indicator of the difficulty of a pattern. Generally, the lower the ratios, the more difficult the pattern.

08': 2.4 to 1

14': 3.9 to 1

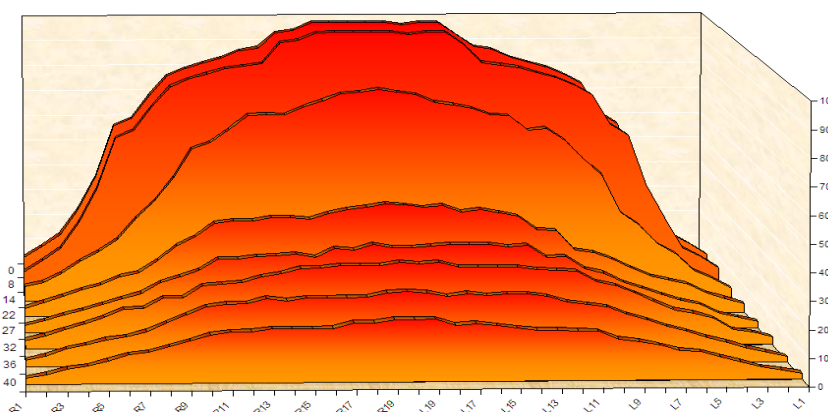
22': 3.3 to 1

27': 3.0 to 1

32': 2.6 to 1

36': 2.6 to 1

40': 2.6 to 1

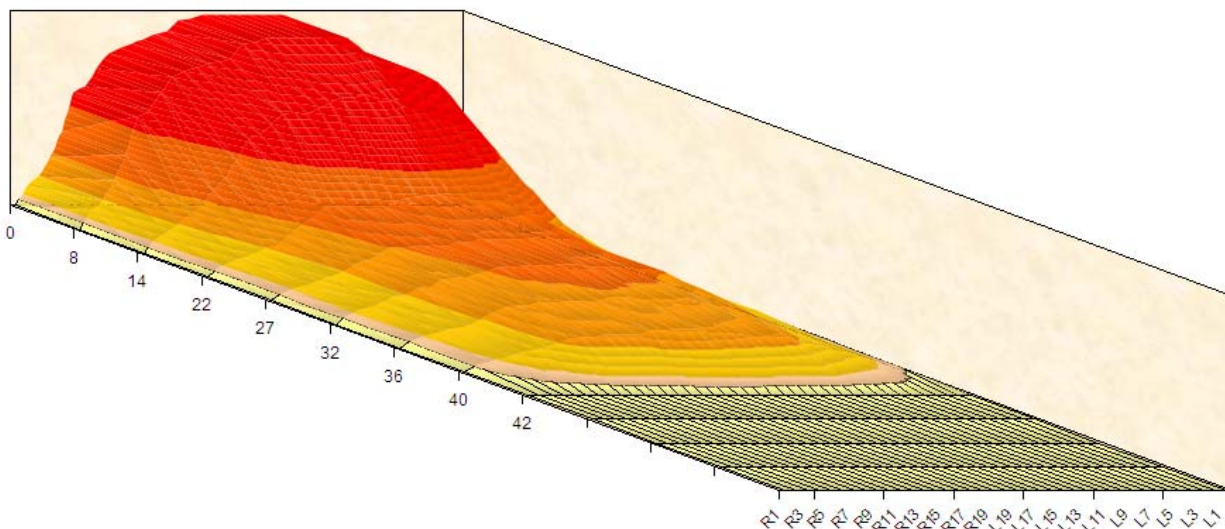


## Front to Back Taper Ratios

Outside Taper 4.8 to 1

Inside Taper 4.5 to 1

The 3D chart below gives a visual of how the conditioner tapers off from the front end of the pattern to the back end of the pattern.



# 2008 EBT 5<sup>th</sup> Oltremare Columbia 300 Open



## Kegel Sanction Technology™ Lane Machine Settings

Oil per Board (Pump Setting): 40 µL

Pattern Distance: 42 feet

Screen #	Left End of Stream	Right End of Stream	# Loads or Streams	Travel Speed (in/sec)	Beginning Distance of Load (feet)	Ending Distance of Load (feet)	# Boards Crossed per Load	Total Boards Crossed	Total Volume of Oil (µL)
01F	2	2	2	10.00	0.00	1.40	37	74	2960
02F	4	4	1	10.00	1.40	2.80	33	33	1320
03F	7	7	1	10.00	2.80	4.20	27	27	1080
04F	8	8	1	10.00	4.20	5.60	25	25	1000
05F	9	8	1	10.00	5.60	7.00	24	24	960
06F	10	9	2	10.00	7.00	9.80	22	44	1760
07F	11	10	2	10.00	9.80	12.60	20	40	1600
08F	12	11	1	14.00	12.60	14.50	18	18	720
09F	13	12	1	14.00	14.50	16.40	16	16	640
10F	14	13	1	14.00	16.40	18.30	14	14	560
11F	15	14	1	14.00	18.30	20.20	12	12	480
12F	2	2	0	18.00	20.20	32.00			
13F	2	2	0	22.00	32.00	37.00			
14F	2	2	0	30.00	37.00	42.00			

Forward Oil: 13.08 mL

01R	2	2	0	30.00		21.00			
02R	9	9	1	14.00	21.00	19.10	23	23	920
03R	8	8	1	14.00	19.10	17.20	25	25	1000
04R	7	7	1	14.00	17.20	15.30	27	27	1080
05R	6	6	2	10.00	15.30	12.50	29	58	2320
06R	5	5	2	10.00	12.50	9.70	31	62	2480
07R	4	4	1	10.00	9.70	8.30	33	33	1320
08R	3	3	1	10.00	8.30	6.90	35	35	1400
09R	2	2	0	10.00	6.90	0.00			

Reverse Oil: 10.52 mL

Total Forward + Reverse Oil: 23.60 mL





# 2008 EBT 5<sup>th</sup> Oltremare Columbia 300 Open

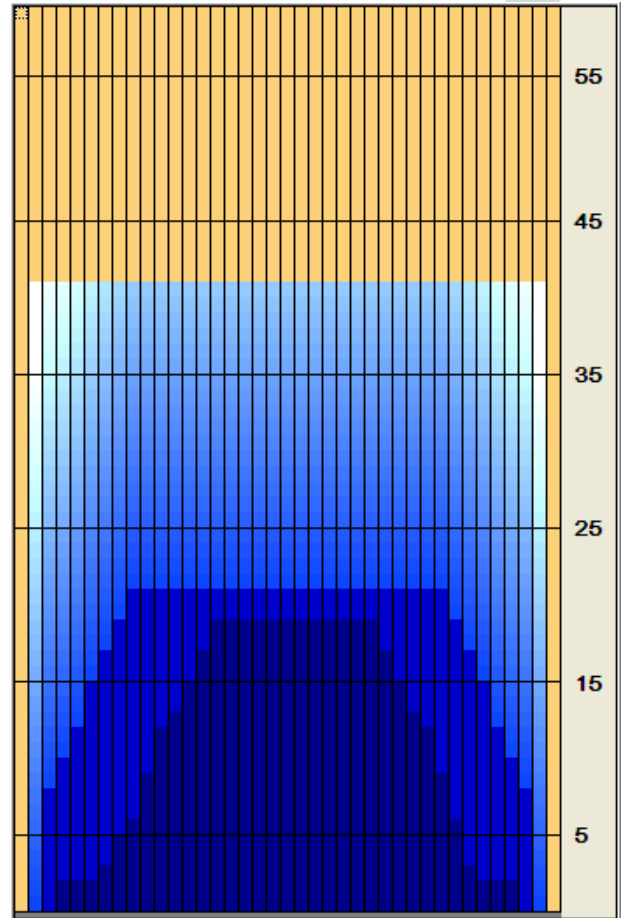
The charts on this page are generated by Kegel's KOSI lane machine software from the Kegel Sanction Technology™ program sheet.



The **OVERHEAD CHART** on the right shows where the conditioner is applied on both the forward and reverse screens. The gradient area is a calculation of how the conditioner might bleed off the buffer brush.

The **COMPOSITE GRAPH** below shows the total amount of conditioner applied to every board. A good way to think about this graph is to envision all the conditioner on the lane being pushed back to the foul line. Once all the conditioner is stacked up, this is what it would look like.

The **RATIOS** above the composite graph are also calculated by the lane program sheet and represent the ratios by total volume. Lower ratio patterns are more difficult.



Arrow Zone Ratio	Item	2-5L:16L-20	6-10L:16:-20	11-15L:16L-20	16L-20:20-16R	16L-20:20-16R	20-16R:15-11R	20-16R:10-6R	20-16R:5-2R
	ul Arrow	170	520	840	920	920	872	560	170
	Zone Ratio	5.41	1.77	1.1	1	1	1.06	1.64	5.41

Track Zone Ratio	Item	3L-7L:18L-18R	8L-12L:18L-18R	13L-17L:18L-18R	18L-18R:17R-13R	18L-18R:12R-8R	18L-18R:7R-3R
	Description	Outside Track:Middle	Middle Track:Middle	Inside Track:Middle	Middle: Inside Track	Middle:Middle Track	Middle:Outside Track
	Track Zone Ratio	3.29	1.37	1.03	1.01	1.26	3.29

Oil Per Board: **40 uL**      Forward Oil **13.08 mL**      Reverse Oil **10.52 mL**  
 Pattern **42 Feet**      Volume Oil **23.6 mL**

