



# 2009 Bowling This Month Tournament



Oil Per Board: 50 uL      Oil Pattern Distance: 39 Feet      Volume Oil Total: 24.05 mL      Total Boards Crossed: 481 Boards

Forward Oil Total: 11.1 mL      Reverse Oil Total: 12.95 mL  
 Forward Boards Crossed: 222 Boards      Reverse Boards Crossed: 259 Boards

	Start	Stop	Loads	Speed	Crossed	Start	End	Feet	T.Oil
1	2L	2R	3	14	111	0.0	3.9	3.9	5550
2	2L	2R	3	18	111	3.9	11.5	7.6	5550
3	2L	2R	0	18	0	11.5	20.0	8.5	0
4	2L	2R	0	22	0	20.0	30.0	10.0	0
5	2L	2R	0	30	0	30.0	39.0	9.0	0

Navigation: Forward Reverse More Info

Report Date

2/19/2009

Conditioner:  
Kegel Infinity

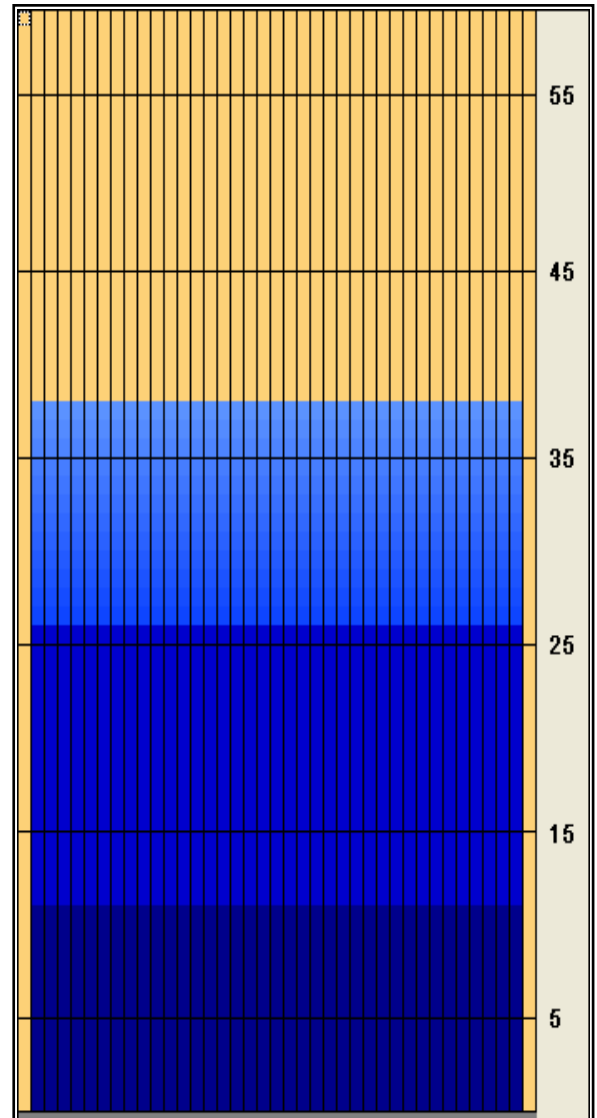
TransferType:  
Transfer Brush

Forward Oil

Reverse Oil

Combined Oil

Buff Area



	Start	Stop	Loads	Speed	Crossed	Start	End	Feet	T.Oil
1	2L	2R	0	30	0	39.0	26.0	-13.0	0
2	2L	2R	3	22	111	26.0	16.7	-9.3	5550
3	2L	2R	2	18	74	16.7	11.6	-5.1	3700
4	2L	2R	2	14	74	11.6	7.7	-3.9	3700
5	2L	2R	0	10	0	7.7	0.0	-7.7	0

Navigation: Forward Reverse More Info

Arrow Zone Ratios

Item	2-6L:16L-20	6-10L:16-20	11-15L:16L-20	16L-20:20-16R	16L-20:20-16R	20-16R:15-11R	20-16R:10-6R	20-16R:5-2R
ul Arrow	650	650	650	650	650	650	650	650
Zone Ratio	1	1	1	1	1	1	1	1

Track Zone Ratios

Item	3L-7L:18L-18R	8L-12L:18L-18R	13L-17L:18L-18R	18L-18R:17R-13R	18L-18R:12R-8R	18L-18R:7R-3R
Description	Outside Track:Middle	Middle Track:Middle	Inside Track:Middle	Middle: Inside Track	Middle:Middle Track	Middle:Outside Track
Track Zone Ratio	1	1	1	1	1	1

