

2010 ETBF Women's Championship - 35'



Oil Pattern Distance: **35 Feet**
 Forward Oil Total: **16.12 mL**
 Forward Boards Crossed: **403 Boards**

Reverse Oil Total: **6.28 mL**
 Reverse Boards Crossed: **157 Boards**

Oil Per Board: **40 uL**
 Volume Oil Total: **22.4 mL**
 Total Boards Crossed: **560 Boards**

	Start	Stop	Loads	Speed	Crossed	Start	End	Feet	T.Oil
1	2L	2R	3	14	111	0.0	3.9	3.9	4440
2	4L	4R	1	14	33	3.9	5.8	1.9	1320
3	5L	5R	3	14	93	5.8	11.7	5.9	3720
4	6L	6R	3	14	87	11.7	17.6	5.9	3480
5	7L	7R	2	18	54	17.6	22.7	5.1	2160
6	8L	8R	1	18	25	22.7	25.2	2.5	1000
7	2L	2R	0	18	0	25.2	30.0	4.8	0
8	2L	2R	0	26	0	30.0	35.0	5.0	0

Navigation: Forward Reverse More Info

	Start	Stop	Loads	Speed	Crossed	Start	End	Feet	T.Oil
1	2L	2R	0	30	0	35.0	20.0	-15.0	0
2	7L	7R	1	22	27	20.0	16.9	-3.1	1080
3	6L	6R	1	18	29	16.9	14.4	-2.5	1160
4	5L	5R	1	18	31	14.4	11.9	-2.5	1240
5	4L	4R	1	18	33	11.9	9.4	-2.5	1320
6	2L	2R	1	14	37	9.4	7.5	-1.9	1480
7	2L	2R	0	14	0	7.5	0.0	-7.5	0

Navigation: Forward Reverse More Info

Conditioner:
Infinity

TransferType:
Transfer Brush

Forward



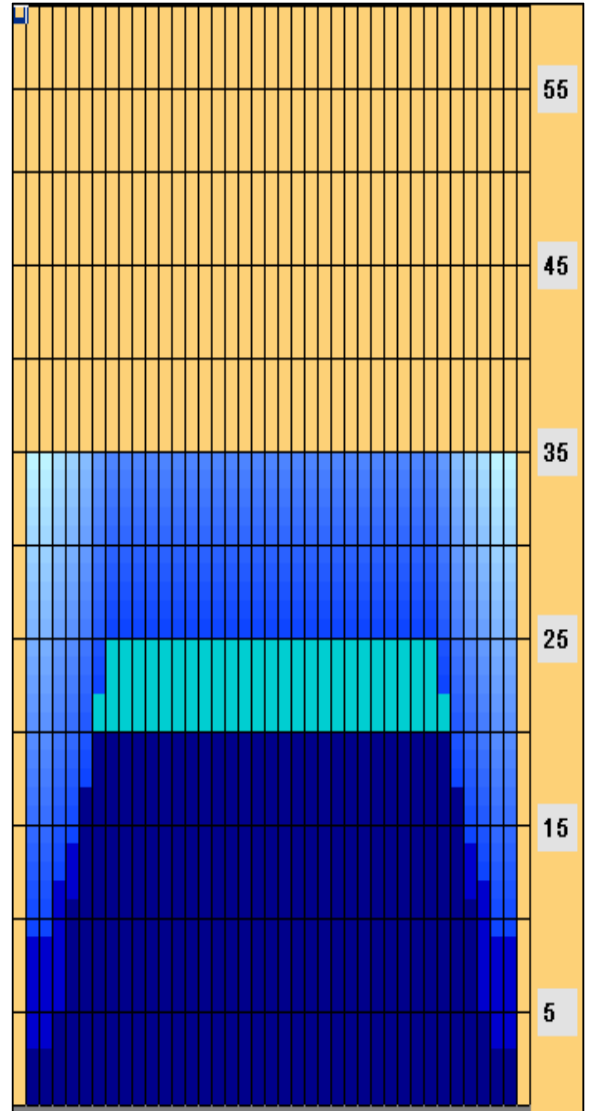
Reverse



Combined



Buff



Reverse Brush Drop at 30'

Item	3L-7L:18L-18R	8L-12L:18L-18R	13L-17L:18L-18R	18L-18R:17R-13R	18L-18R:12R-8R	18L-18R:7R-3R
Description	Outside Track:Middle	Middle Track:Middle	Inside Track:Middle	Middle: Inside Track	Middle:Middle Track	Middle:Outside Track
Track Zone Ratio	1.76	1	1	1	1	1.76

