

2012 Asian Youth Championships - 35 feet



Oil Pattern Distance:	35 Feet	Reverse Brush Drop:	30 Feet	Oil Per Board:	40 uL
Forward Oil Total:	12.32 mL	Reverse Oil Total:	10.24 mL	Volume Oil Total:	22.56 mL
Forward Boards Crossed:	308 Boards	Reverse Boards Crossed:	256 Boards	Total Boards Crossed:	564 Boards

	Start	Stop	Loads	Speed	Crossed	Start	End	Feet	T.Oil
1	2L	2R	2	14	74	0.0	1.9	1.9	2960
2	3L	3R	1	14	35	1.9	3.8	1.9	1400
3	4L	4R	2	14	66	3.8	7.7	3.9	2640
4	6L	5R	2	18	60	7.7	12.8	5.1	2400
5	8L	6R	1	18	27	12.8	15.3	2.5	1080
6	9L	8R	1	18	24	15.3	17.8	2.5	960
7	10L	9R	1	18	22	17.8	20.3	2.5	880
8	2L	2R	0	18	0	20.3	31.0	10.7	0
9	2L	2R	0	26	0	31.0	35.0	4.0	0

Navigation: Forward Reverse More

	Start	Stop	Loads	Speed	Crossed	Start	End	Feet	T.Oil
1	2L	2R	0	30	0	35.0	27.0	-8.0	0
2	7L	7R	2	22	54	27.0	20.8	-6.2	2160
3	5L	5R	2	18	62	20.8	15.7	-5.1	2480
4	4L	4R	2	18	66	15.7	10.6	-5.1	2640
5	2L	2R	2	14	74	10.6	6.7	-3.9	2960
6	2L	2R	0	14	0	6.7	0.0	-6.7	0

Navigation: Forward Reverse More

Conditioner:
Infinity

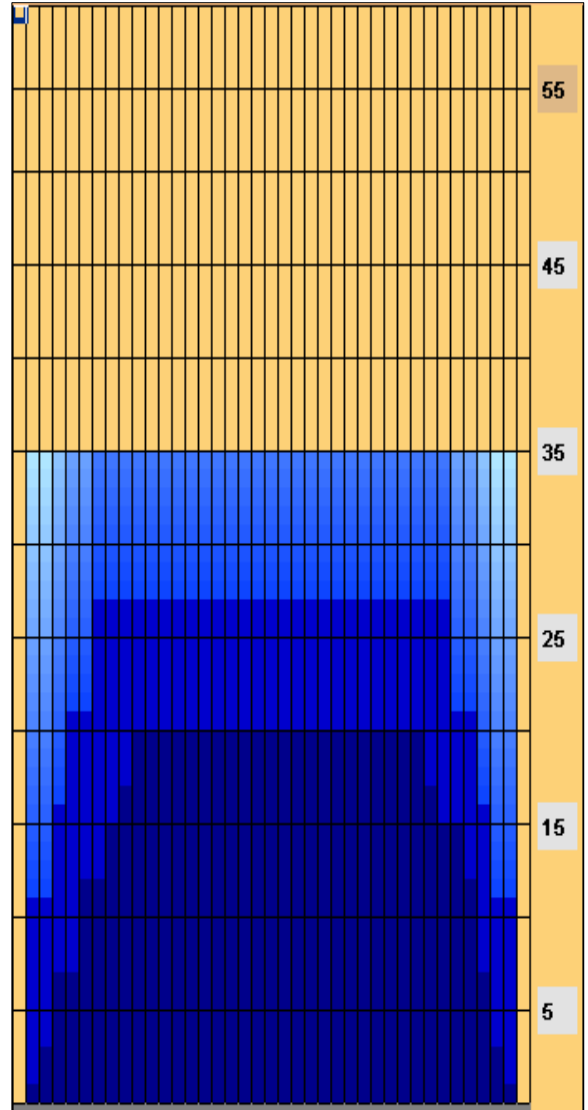
TransferType:
Transfer Brush

Forward

Reverse

Combined

Buff



Item	3L-7L:18L-18R	8L-12L:18L-18R	13L-17L:18L-18R	18L-18R:17R-13R	18L-18R:12R-8R	18L-18R:7R-3R
Description	Outside Track:Middle	Middle Track:Middle	Inside Track:Middle	Middle: Inside Track	Middle:Middle Track	Middle:Outside Track
Track Zone Ratio	1.7	1.03	1	1	1.01	1.58

