

# 2012 EBT 16 - 10th Columbia 300 Vienna Open



**Oil Pattern Distance:** 39 Feet      **Reverse Brush Drop:** 31 Feet      **Oil Per Board:** 50 uL  
**Forward Oil Total:** 16.45 mL      **Reverse Oil Total:** 10.65 mL      **Volume Oil Total:** 27.1 mL  
**Forward Boards Crossed:** 329 Boards      **Reverse Boards Crossed:** 213 Boards      **Total Boards Crossed:** 542 Boards

	Start	Stop	Loads	Speed	Crossed	Start	End	Feet	T.Oil
1	2L	2R	6	14	222	0.0	9.9	9.9	11100
2	6L	6R	1	18	29	9.9	12.4	2.5	1450
3	9L	8R	1	18	24	12.4	14.9	2.5	1200
4	11L	10R	1	18	20	14.9	17.4	2.5	1000
5	12L	11R	1	18	18	17.4	19.9	2.5	900
6	13L	12R	1	18	16	19.9	22.4	2.5	800
7	2L	2R	0	18	0	22.4	34.0	11.6	0
8	2L	2R	0	30	0	34.0	39.0	5.0	0

◀ ▶ ⏪ ⏩ Forward Reverse More

	Start	Stop	Loads	Speed	Crossed	Start	End	Feet	T.Oil
1	2L	2R	0	30	0	39.0	29.0	-10.0	0
2	12L	11R	1	18	18	29.0	26.5	-2.5	900
3	11L	10R	2	18	40	26.5	21.4	-5.1	2000
4	10L	9R	2	18	44	21.4	16.3	-5.1	2200
5	9L	8R	2	14	48	16.3	12.4	-3.9	2400
6	8L	7R	1	14	26	12.4	10.5	-1.9	1300
7	2L	2R	1	14	37	10.5	8.6	-1.9	1850
8	2L	2R	0	10	0	8.6	0.0	-8.6	0

◀ ▶ ⏪ ⏩ Forward Reverse More

Conditioner:  
Infinity

TransferType:  
Transfer Brush

Forward



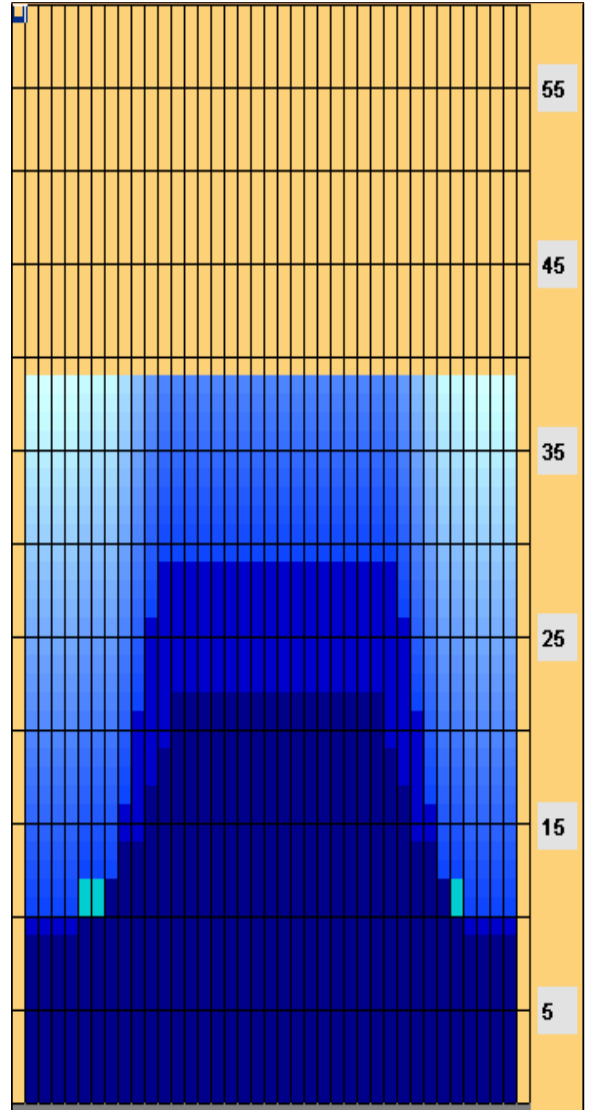
Reverse



Combined



Buff



Item	3L-7L:18L-18R	8L-12L:18L-18R	13L-17L:18L-18R	18L-18R:17R-13R	18L-18R:12R-8R	18L-18R:7R-3R
Description	Outside Track:Middle	Middle Track:Middle	Inside Track:Middle	Middle: Inside Track	Middle:Middle Track	Middle:Outside Track
Track Zone Ratio	2.7	1.41	1	1	1.22	2.63

