

# ABT #4



<b>Oil Pattern Distance:</b>	<b>35 Feet</b>	<b>Reverse Brush Drop:</b>	<b>35 Feet</b>	<b>Oil Per Board:</b>	<b>50 uL</b>
<b>Forward Oil Total:</b>	<b>13.95 mL</b>	<b>Reverse Oil Total:</b>	<b>10.45 mL</b>	<b>Volume Oil Total:</b>	<b>24.4 mL</b>
<b>Forward Boards Crossed:</b>	<b>279 Boards</b>	<b>Reverse Boards Crossed:</b>	<b>209 Boards</b>	<b>Total Boards Crossed:</b>	<b>488 Boards</b>

	Start	Stop	Loads	Speed	Crossed	Start	End	Feet	T.Oil
1	2L	2R	2	10	74	0.0	1.4	1.4	3700
2	4L	4R	2	14	66	1.4	5.3	3.9	3300
3	5L	5R	2	18	62	5.3	10.4	5.1	3100
4	7L	7R	1	18	27	10.4	12.9	2.5	1350
5	8L	8R	2	18	50	12.9	18.0	5.1	2500
6	2L	2R	0	22	0	18.0	35.0	17.0	0

Conditioner:  
Type In or Select One

TransferType:  
Type In or Select One

Forward



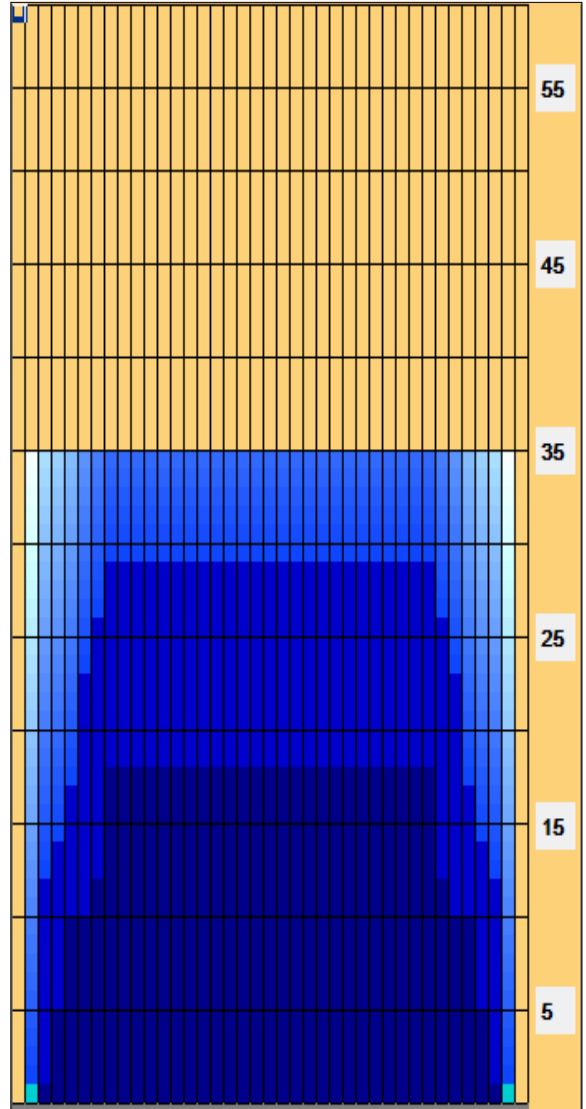
Reverse



Combined



Buff



Forward Reverse More

	Start	Stop	Loads	Speed	Crossed	Start	End	Feet	T.Oil
1	2L	2R	0	30	0	35.0	29.0	-6.0	0
2	8L	8R	1	22	25	29.0	25.9	-3.1	1250
3	7L	7R	1	22	27	25.9	22.8	-3.1	1350
4	6L	6R	2	22	58	22.8	16.6	-6.2	2900
5	5L	5R	1	18	31	16.6	14.1	-2.5	1550
6	4L	4R	1	18	33	14.1	11.6	-2.5	1650
7	3L	3R	1	18	35	11.6	9.1	-2.5	1750
8	2L	2R	0	18	0	9.1	0.0	-9.1	0

Forward Reverse More

Item	3L-7L:18L-18R	8L-12L:18L-18R	13L-17L:18L-18R	18L-18R:17R-13R	18L-18R:12R-8R	18L-18R:7R-3R
Description	Outside Track:Middle	Middle Track:Middle	Inside Track:Middle	Middle:Inside Track	Middle:Middle Track	Middle:Outside Track
Track Zone Ratio	1.9	1	1	1	1	1.9

